

Phone: 01964 533343

Email: info@hpsestateagents.co.uk

HPS
ESTATE AGENTS



Lindale Avenue Hornsea, HU18 1RN

Nestled in the tranquil surroundings of Lindale Avenue, Hornsea, this charming semi-detached bungalow offers a delightful blend of comfort and convenience. With two reception rooms, this property provides ample space for relaxation and entertaining, making it an ideal home for both families and couples alike.

The bungalow features two well-appointed bedrooms, including a master bedroom located on the first floor, complete with an en-suite bathroom for added privacy and convenience. The second bedroom is equally inviting, perfect for guests.

The property boasts two bathrooms, ensuring that morning routines are a breeze. The well-equipped kitchen is a highlight, providing everything you need to prepare delicious meals.

The outdoor space is perfect for soaking up the sun and enjoying the peaceful atmosphere that surrounds the home.

Situated close to the coast and near the picturesque mere, this location offers a wonderful opportunity for leisurely walks and outdoor activities. The serene environment makes it a perfect retreat from the hustle and bustle of everyday life.

In summary, this semi-detached bungalow on Lindale Avenue is a splendid choice for those seeking a peaceful yet convenient lifestyle, with its spacious interiors, lovely gardens, and proximity to the beautiful Hornsea coast. Don't miss the chance to make this delightful property your new home.

Viewing highly recommended

EPC- awaiting- Council Tax band -B- Tenure- Freehold

£210,000

www.hpsestateagents.co.uk

Entrance Hall

9'2" x 2'11" (2.81 x 0.89)

Double glazed entrance door with dado rail and carpeted flooring. Radiator plus doors leading to the kitchen as well as the living room.

Hall

7'1" x 4'4" (2.17 x 1.33)

Carpeted flooring with doors leading to bedroom, dining room and bathroom.

Kitchen

11'0" x 8'7" (3.37 x 2.62)

Fitted wall and base units complimented with work surfaces. Sink unit plus drainer complimented by a mixer tap. Integrated dishwasher also washing machine. Electric freestanding cooker and extractor hood. Vertical wall mounted radiator. LED lighting and double glazed windows to front and side aspect.

Living Room

16'7" x 11'6" (5.08 x 3.51)

Double glazed window overlooking the front garden. Oak mantel plus hearth with gas controlled burner. Wall lights as well as coved ceiling. Carpeted flooring adds the finishing touches to this stylish room.

Dining Room

10'3" x 9'3" (3.14 x 2.83)

Double glazed patio doors leading onto patio. Coved ceiling and carpeted flooring. Spindled staircase leading to the first floor.

Bedroom 2

13'4" x 9'10" (4.08 x 3.02)

Fitted wardrobes and drawers compliment this spacious ground floor bedroom. Carpeted flooring plus coved ceiling. Double glazed window with views of the rear garden.

Bathroom

6'0" x 5'4" (1.85 x 1.65)

Ground floor with step in shower cubicle. Vanity unit plus hand wash basin. Tiled walls and vinyl flooring.

- Immaculate key ready home
- Master bedroom with En-Suite
- South facing rear garden

Low level W.C . Window to side aspect also LED lighting.

First Floor landing

14'11" x 2'11" (4.55 x 0.89)

Carpeted spindled staircase leading to the master bedroom. Window to the side aspect. Airing cupboard housing the combi boiler and plenty of storage.

Master Bedroom

16'4" x 11'3" (4.99 x 3.43)

Carpeted flooring with plenty of storage cupboards in the eaves. Sloped ceiling as well as LED lighting plus Velux window to the front aspect. Door leading to the En- Suite

En- Suite

12'10" x 5'8" (3.92 x 1.75)

Panelled walls plus part tiled walls creating a stylish room Panelled bath with shower over the bath. Vanity unit housing a hand wash basin. Low level W.C also velux window . Heated towel rail and vinyl flooring. Wooden door leading to eaves space.

Front Garden

Mainly lawn plus gravelled drive leading to the side garden and detached garage. Brick boundary also paved path. Fenced boundary complimented with mature shrubbery and flower beds. Double wooden gates to the side garden.

Side Garden

Gravelled drive to the garage. Brick wall boundary. Gate and fence to the rear garden. Outside water supply plus electric points.

Detached Garage

Brick built garage with GRP roof. Up and over door plus light power points

Rear Garden

Superb space featuring different areas for relaxing. South facing, boasting mainly lawn whilst benefitting from a paved patio area. Garden shed plus a greenhouse. Borders offer plenty of colour with a lovely variety of flowers and shrubs.

- Low maintenance gardens
- Ground floor bathroom
- Fitted wardrobes in ground floor bedroom

About the property

Tenure- Freehold

Council Tax Band-

EPC-

Water- Mains drainage

Heating - Gas

Disclaimer

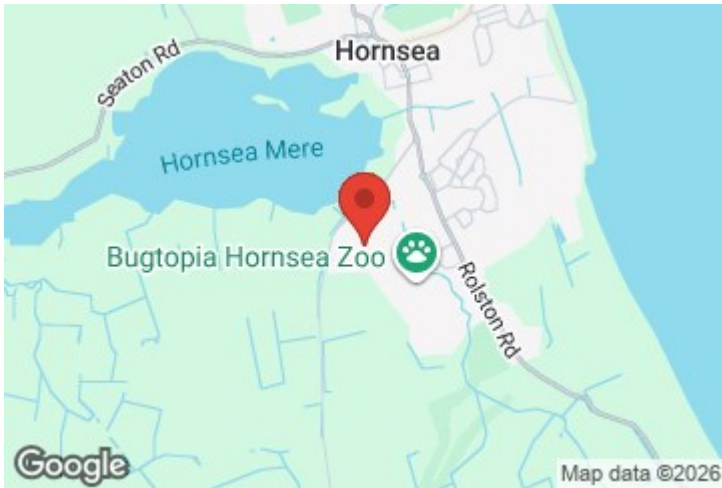
Laser Tape Clause - Laser Tape Clause

All measurements have been taken using a laser tape measure and therefore, may be subject to a small margin of error.

Disclaimer - These particulars are produced in good faith, are set out as a general guide only and do not constitute, nor constitute any part of an offer or a contract. None of the statements contained in these particulars as to this property are to be relied on as statements or representations of fact. Any intending purchaser should satisfy him/herself by inspection of the property or otherwise as to the correctness of each of the statements prior to making an offer. No person in the employment of HPS Estate Agents has any authority to make or give any representation or warranty whatsoever in relation to this property

- Detached garage plus parking for 3 cars
- Stylish kitchen boasting integrated appliances
- Must be viewed to truly appreciate this beautiful bungalow

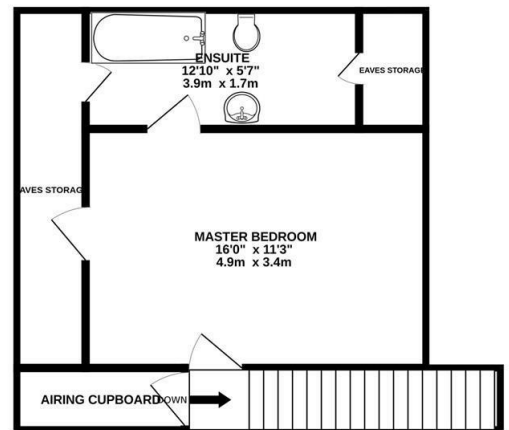
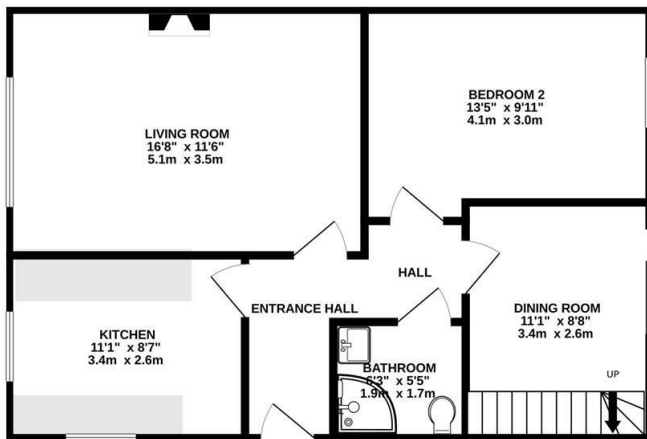




Floor Plan

GROUND FLOOR

1ST FLOOR



Whilst every attempt has been made to ensure the accuracy of the floorplan contained here, measurements of doors, windows, rooms and any other items are approximate and no responsibility is taken for any error, omission or mis-statement. This plan is for illustrative purposes only and should be used as such by any prospective purchaser. The services, systems and appliances shown have not been tested and no guarantee as to their operability or efficiency can be given.
Made with Metropix ©2026

These particulars, whilst believed to be accurate are set out as a general outline only for guidance and do not constitute any part of an offer or contract. Intending purchasers should not rely on them as statements of representation of fact, but must satisfy themselves by inspection or otherwise as to their accuracy. No person in this firm's employment has the authority to make or give any representation or warranty in respect of the property.

Energy Efficiency Rating		Current	Potential
Very energy efficient - lower running costs			
(92 plus) A			
(81-91) B			
(69-80) C			
(55-68) D			
(39-54) E			
(21-38) F			
(1-20) G			
Not energy efficient - higher running costs			
England & Wales	EU Directive 2002/91/EC		

Environmental Impact (CO ₂) Rating		Current	Potential
Very environmentally friendly - lower CO ₂ emissions			
(92 plus) A			
(81-91) B			
(69-80) C			
(55-68) D			
(39-54) E			
(21-38) F			
(1-20) G			
Not environmentally friendly - higher CO ₂ emissions			
England & Wales	EU Directive 2002/91/EC		